

What's inside a cell?

1. Fill in the gaps with the words in the box.

skin cell jelly-like dot organisms division

A _____ is the basic unit of structure of all living _____, the “building block” of all animals and plants.

Cells are very small. They are made up of different parts. Animal cells and plant cells both have a cell membrane, cytoplasm and a nucleus.

The membrane is a thick _____. It controls the entry and the exit of substances.

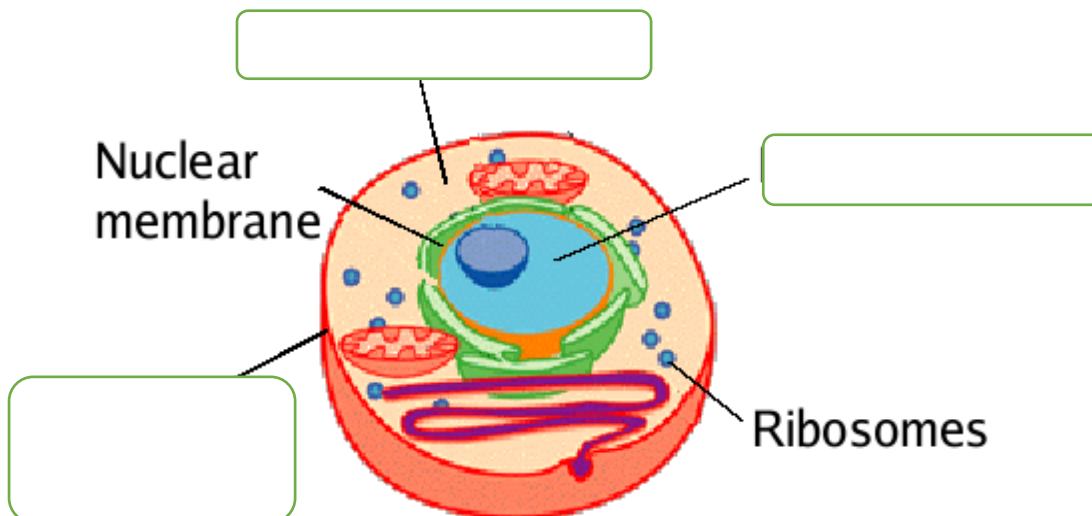
The cytoplasm is a _____ mixture. It is in this that most cellular activities occur, such as metabolic pathways and cell _____.

The nucleus is a dark _____. It controls every activity in the cell.

2. Match each part of the cell to its function.

- | | |
|----------------------|---|
| 1. The cell membrane | a. protects the cell. |
| 2. In the cytoplasm | b. controls the activities in the cell. |
| 3. The nucleus | c. most activities of the cell occur. |

3. Label the picture.



4. Animal cell or plant cell? Fill in the gaps with the words in the box, then label the pictures.

parts similar liquid green wall

Plant cells are _____ to animal cells, they have a nucleus, a cell membrane and a cytoplasm. In addition, plant cells have some _____ that animal cells don't have: a cell wall, a vacuole and chloroplasts. The cell _____ surrounds the cell membrane. The vacuole is a space inside the cell which contains a _____ called cell sap. Chloroplasts are _____ dots: they contain chlorophyll.

